

# QUINN ROOFTILES

## LOCHERNE

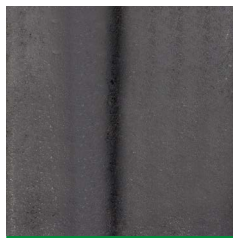
Quinn Rooftiles are manufactured to the latest European standard BS EN 490. Every Tile produced carries with it the Kitemark seal of approval that confirms our products outstanding quality and appeal. Quinn Rooftiles have sustained investment to manufacture Rooftiles of outstanding quality, character and style.

### Description

Our only Double Pantile forms a gentle flowing pattern that gives instant visual appeal and is also available in five colours. It performs on pitches as low as 17.5 and combines its exceptional strength and beautiful smooth surface with stunning aesthetics.



Clay Red



Matt Black



Rustic Mix



Slate Grey



Turf Brown

### Packaging

No. of tiles/pallet - 192

### Fixings

For a full range of fixing alternatives and requirements please refer to BS 5534

Nails	70mm x 3.35mm alloy ringshank
Batten Fixing	Standard Locherne Tile Clip
Eave Fixing	Standard Locherne Eave Clip
Verge Fixing	Standard Locherne Verge Clip - Mortar bedding on mineral fibre strip Quinn dry verge system (individual units)

### Technical Properties

Size	420mm x 334mm
Minimum Pitch	17.5°
Maximum Pitch (without special fixing)	44°
Headlap (min/max)	<b>17.5° - 22.5°</b> 100mm (min) 140mm (max)
	<b>above 22.5°</b> 75mm (min) 140mm (max)
Maximum Gauge	345mm
Linear cover	300mm - 302mm
Covering Capacity (nett at 320mm gauge)	10.4 Tiles/m <sup>2</sup>
Surface	Smooth
Weight (approx.)	at 320 gauge 51kg/m <sup>2</sup>
Weight (approx.)	4.9 tonnes per (1,000 tiles)
Batten size* (Rafter centres not exceeding 600mm)	50mm x 36mm 38mm x 25mm
Battens required (nett)	3.1 metre/m <sup>2</sup> (at 320mm gauge)

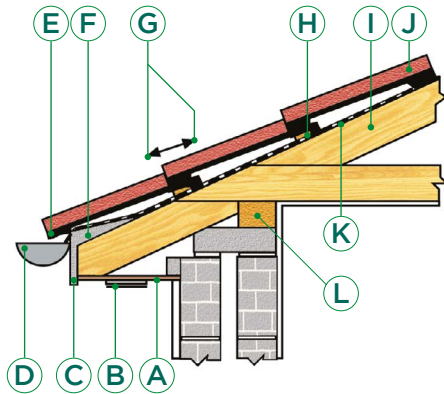
Abutment	Secret Gutter (cover Flashing)
Eaves	Locherne Tile with Locherne Eave filler
Ridge/Hip	457mm half round Ridge Tile butt-jointed
Valley	Open metal valley / Open trough valley lead lining (or other approved lining)

\* Note: Refer to National Standard

# QUINN ROOFTILES

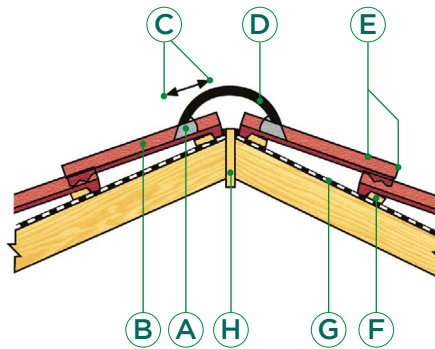
## LOCHERNE

### EAVES DETAILS



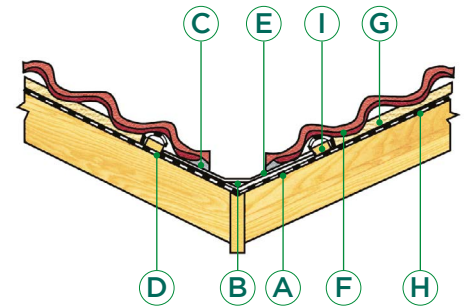
- A Soffit
- B 75 x 225 Ventilator
- C Fascia Board
- D Gutter
- E Eaves Filler
- F Fillet
- G Headlap (75mm Min)
- H Batten
- I 345mm Max Gauge
- J Locherne Tile
- K Felt
- L Wall Plate

### SECTION THROUGH RIDGE



- A Mortar
- B Locherne Tile
- C Headlap (75mm Min)
- D Half Rounded Ridge Tile
- E Headlap (75mm Min)
- F Batten
- G Felt
- H Ridge Board

### SECTION THROUGH VALLEY



- A Valley Boarding
- B Lead Lining
- C Mortar Bedding
- D 600mm Felt Strip
- E Slate Undercloak
- F Locherne Tile Cut to Rake
- G Batten
- H Felt
- I Counter Batten

### TILES

The roof is to be covered with LOCHERNE Double pantiles as per sample approved and laid in even courses of not more than 345mm gauge and not less than 75mm headlap.

### BATTENS

Approved quality softwood tiling battens to be laid to the correct gauge determined by the roof pitch (see Technical Information). The joints of the battens should always meet half way across top of rafters.

### VALLEYS

The Valleys are to be formed with lead lining (or other approved lining) supported on valley boarding with tiles neatly cut and bedded on mineral fibre strip. Leaving 125mm clear channel.

### UNDERLAY

Approved reinforced roofing felt is to be laid over rafters, lapped 150mm horizontally and 150mm vertically, carried well into gutters, and secured with clout nails. The underlay must drain any moisture into the eaves gutter and be fixed so that no troughs are formed in which water can be trapped. If necessary, full support must be provided.

### VERGES

The verges to be formed with 150mm mineral fibre strip butt jointed and projecting 38-50mm over gable wall or bargeboard. All verge tiles to have one verge clip. The left-hand verge to be laid with purpose made Locherne verge tiles.

### RIDGE AND HIP

The ridges and hips are to be covered with Half Round Ridge tiles. The ridge tiles must provide a minimum cover of 75mm over the top course of tiles and fixed in accordance with BS 5534. Galvanised hip irons are to be fitted at the foot of each hip.

### EAVES

Eaves to be formed with standard tiles and eaves filler supplied by manufacturer. The eaves course must be laid at the same pitch as the rest of the roof.

### ABUTMENTS

The tiles are to be neatly cut to within 25mm to 38mm of the abutment over lead-lined secret gutter.